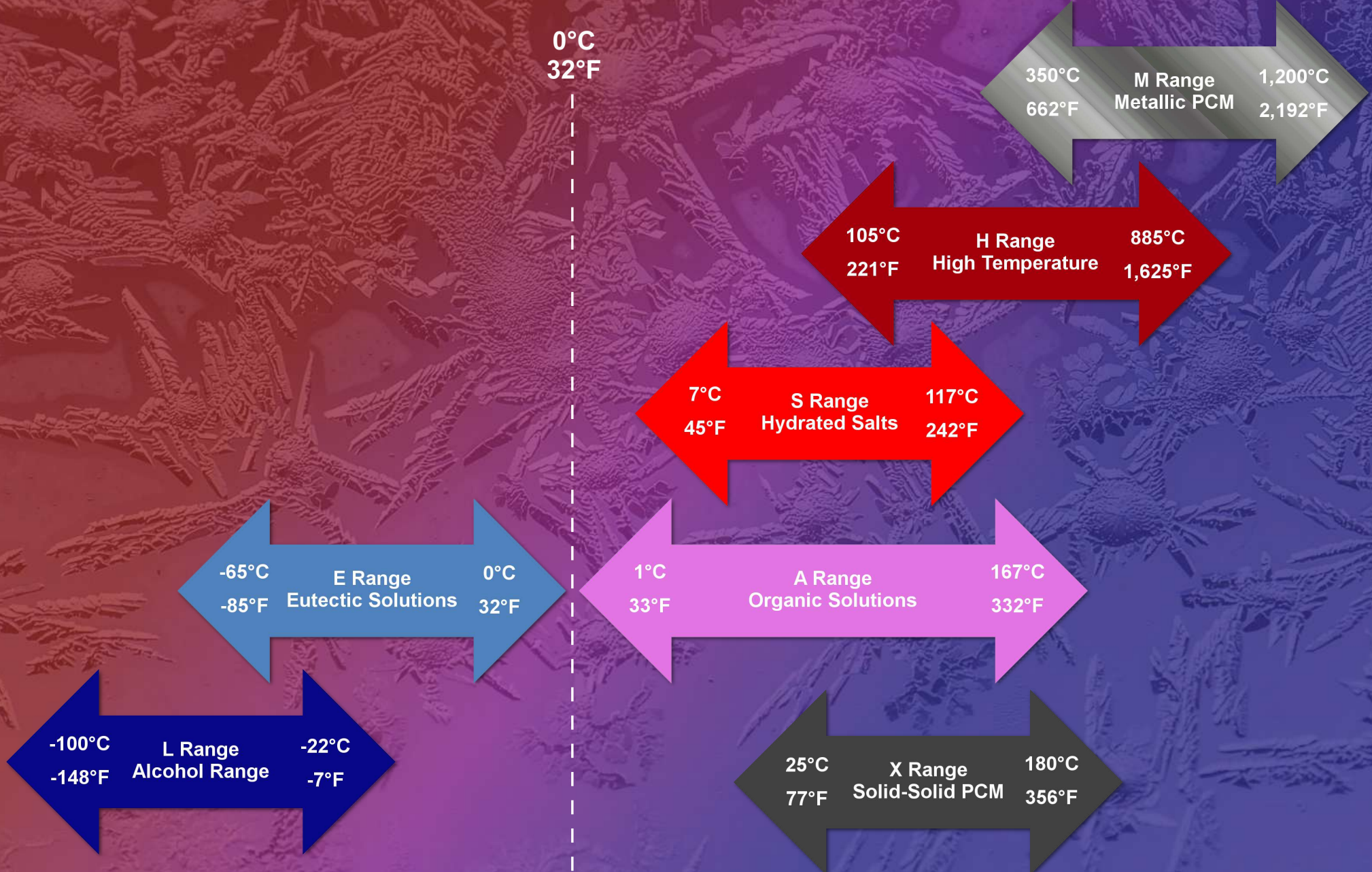


PlusICE[®] Range



PCM Products has a policy of continued product improvement and product data improvement. It reserves the right to change design and specifications without notice.

PlusICE Solid-Solid (X) Range



PCM Type	Phase Change Temperature		Density		Latent Heat Capacity		Volumetric Heat Capacity		Specific Heat Capacity		Thermal Conductivity	
	(°C)	(°F)	(kg/m ³)	(lb/ft ³)	(kJ/kg)	(Btu/lb)	(MJ/m ³)	(Btu/ft ³)	(kJ/kgK)	(Btu/lb°F)	(W/mK)	(Btu/Hr ft ² -°F)
X25	25	77	1,055	66	110	47	116	3,115	1.63	0.39	0.36	0.21
X30	30	86	1,050	66	115	50	121	3,241	1.65	0.39	0.36	0.21
X40	40	104	1,046	65	150	65	157	4,211	1.67	0.40	0.36	0.21
X55	55	131	1,060	66	115	50	122	3,272	1.62	0.38	0.36	0.21
X70	70	158	1,085	68	160	69	174	4,659	1.57	0.37	0.36	0.21
X80	80	176	1,193	75	160	69	191	5,123	1.52	0.36	0.36	0.21
X90	90	194	1,200	75	170	73	204	5,475	1.51	0.36	0.36	0.21
X95	95	203	1,215	76	140	60	170	4,566	1.51	0.36	0.36	0.21
X120	120	248	1,245	78	185	80	230	6,182	1.50	0.36	0.36	0.21
X130	130	266	1,280	80	315	136	403	10,822	1.47	0.35	0.36	0.21
X165	165	329	1,304	81	225	97	293	7,875	1.43	0.34	0.36	0.21
X180	180	356	1,330	83	275	118	366	9,817	1.40	0.33	0.36	0.21