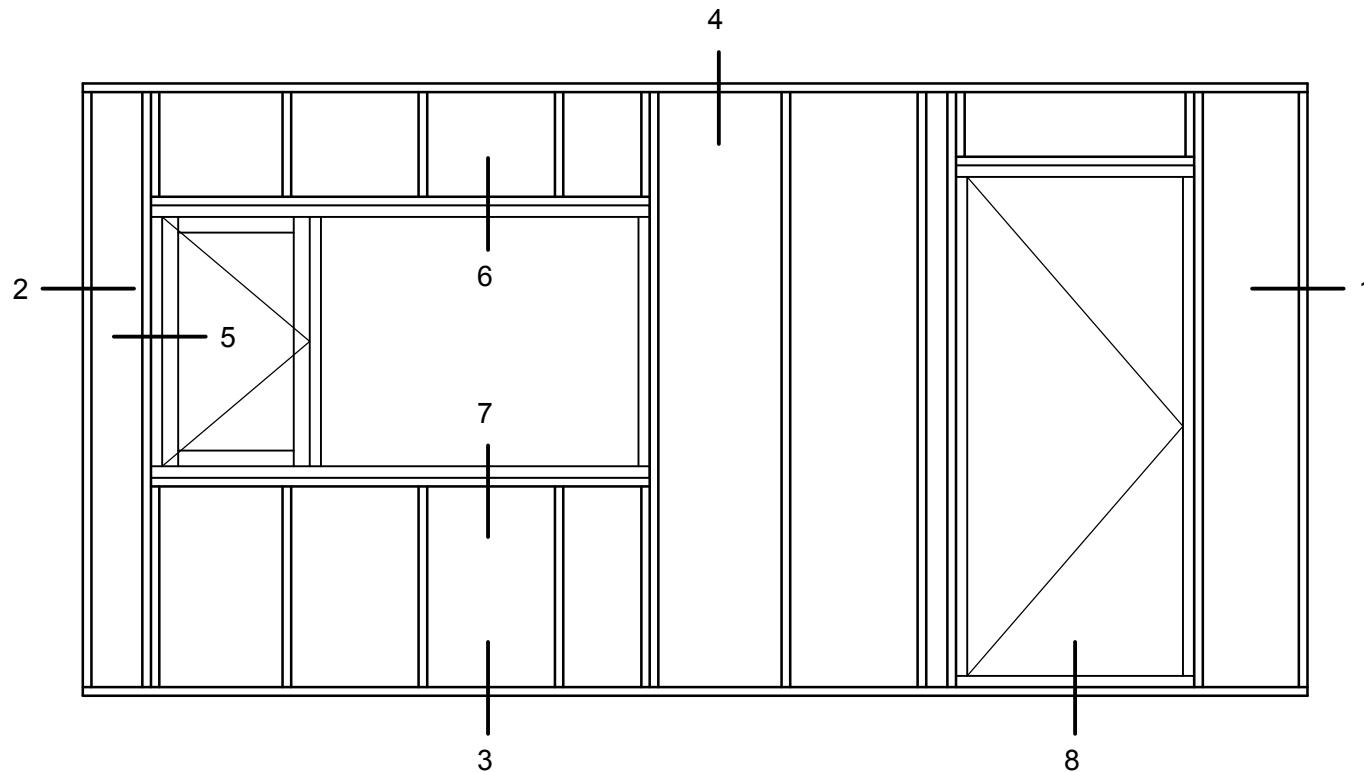
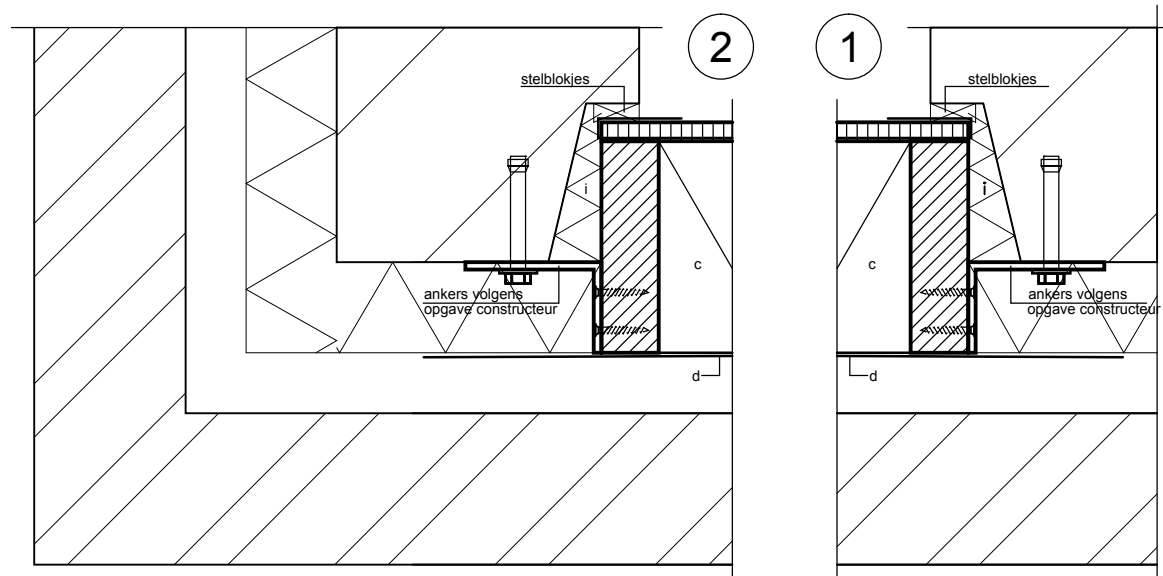


Bijlage 2: details binnenspouwbladen

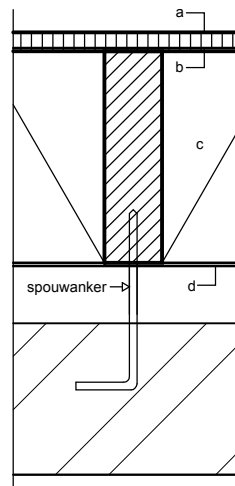


Detail:

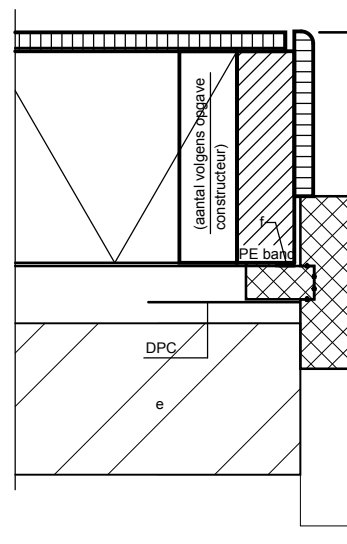
- 1 bouwmuuraansluiting (horizontaal)
- 2 kopgevelaansluiting (horizontaal)
- 3 begane grondvloeraansluiting (verticaal)
- 4 verdiepingsvloeraansluiting (verticaal)
- 5 aansluiting kozijn (horizontaal)
- 6 aansluiting bovendorpel kozijn (verticaal)
- 7 aansluiting onderdorpel kozijn (verticaal)
- 8 onderdorpel deurkozijnaansluiting (verticaal)



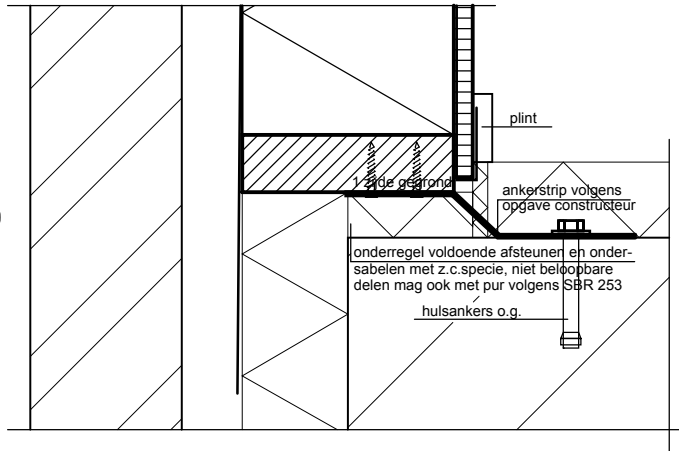
1a



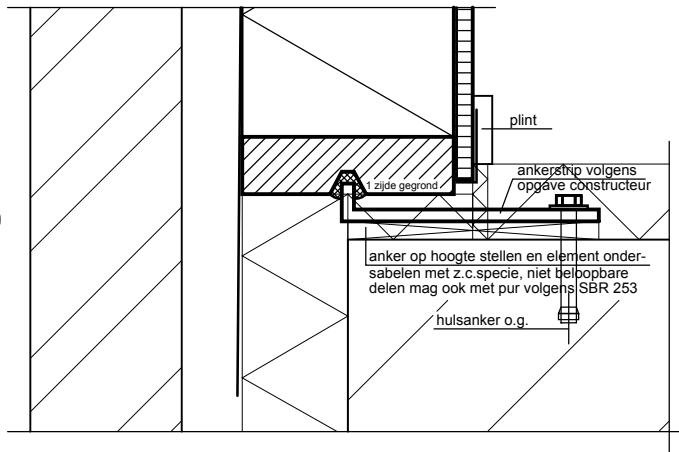
5



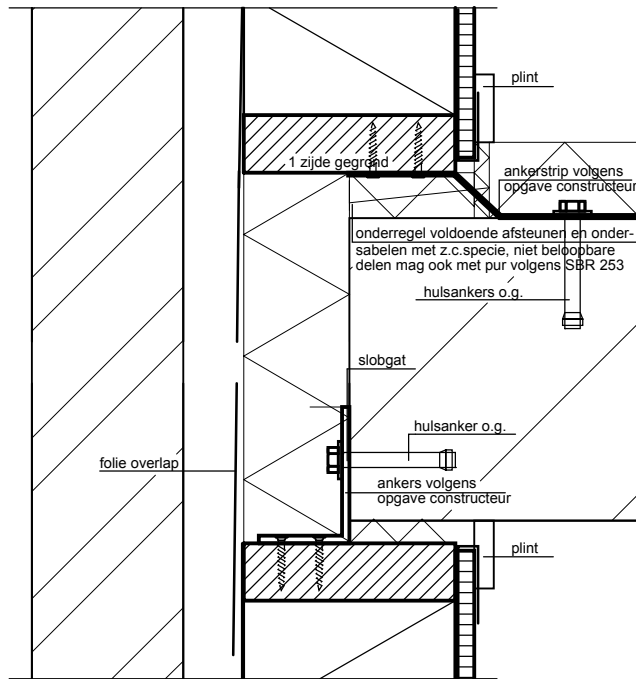
3



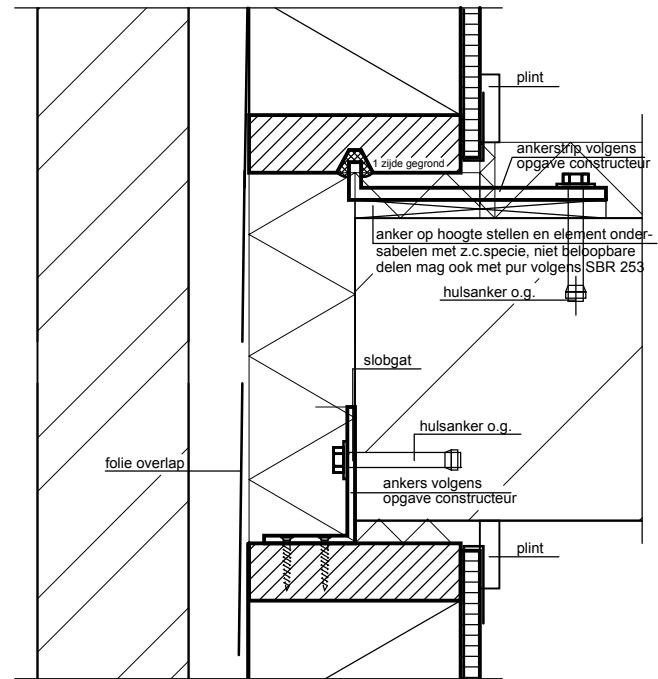
3



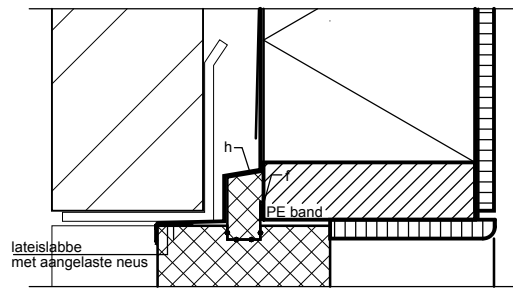
4



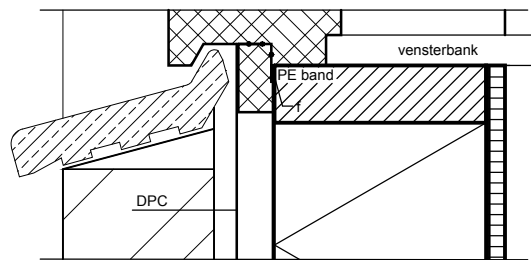
4



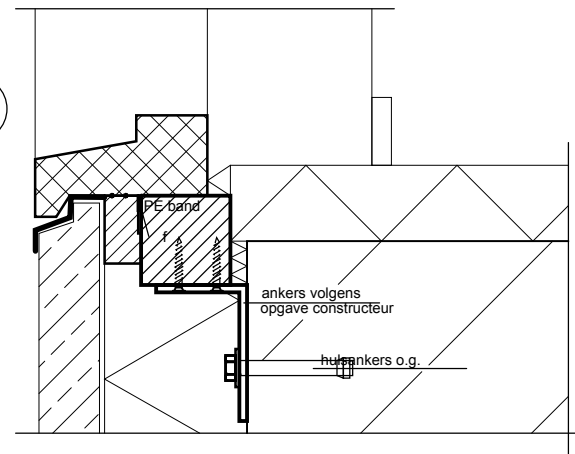
6



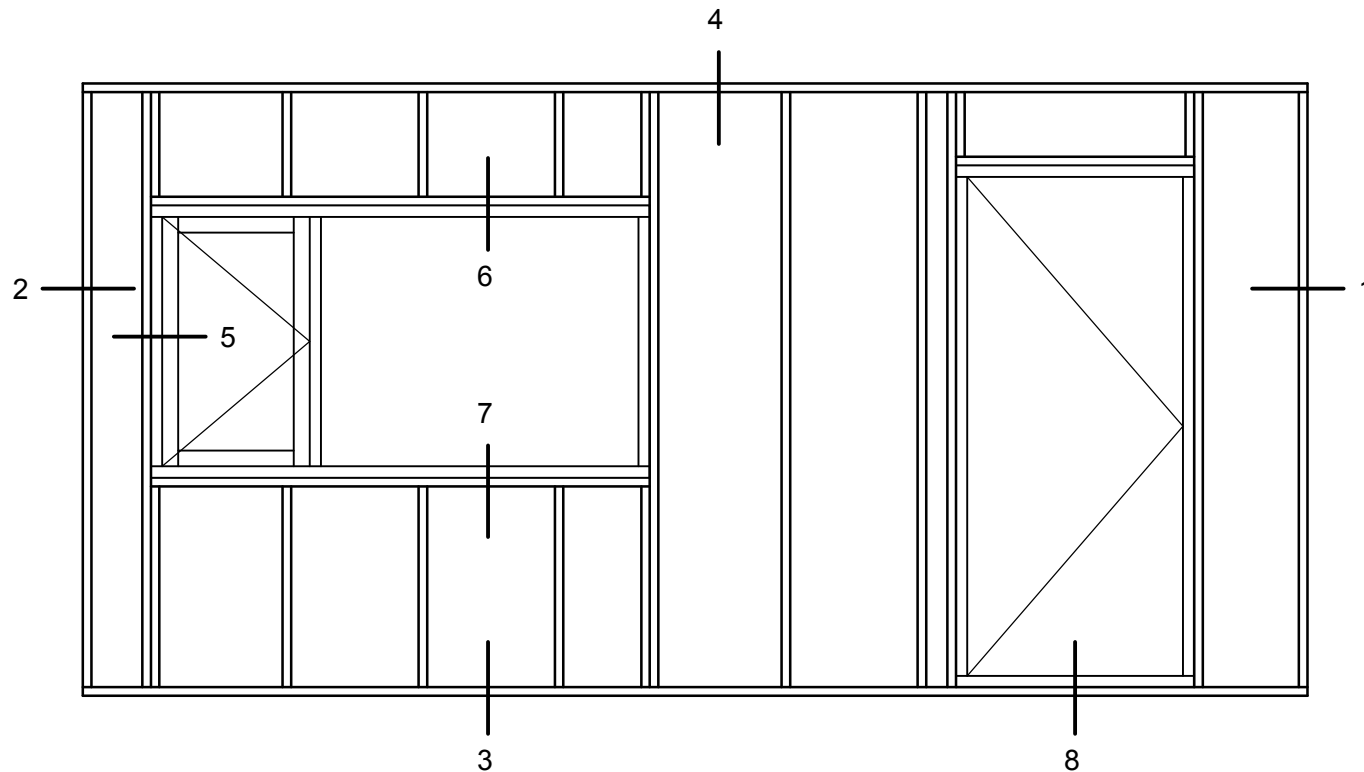
7



8

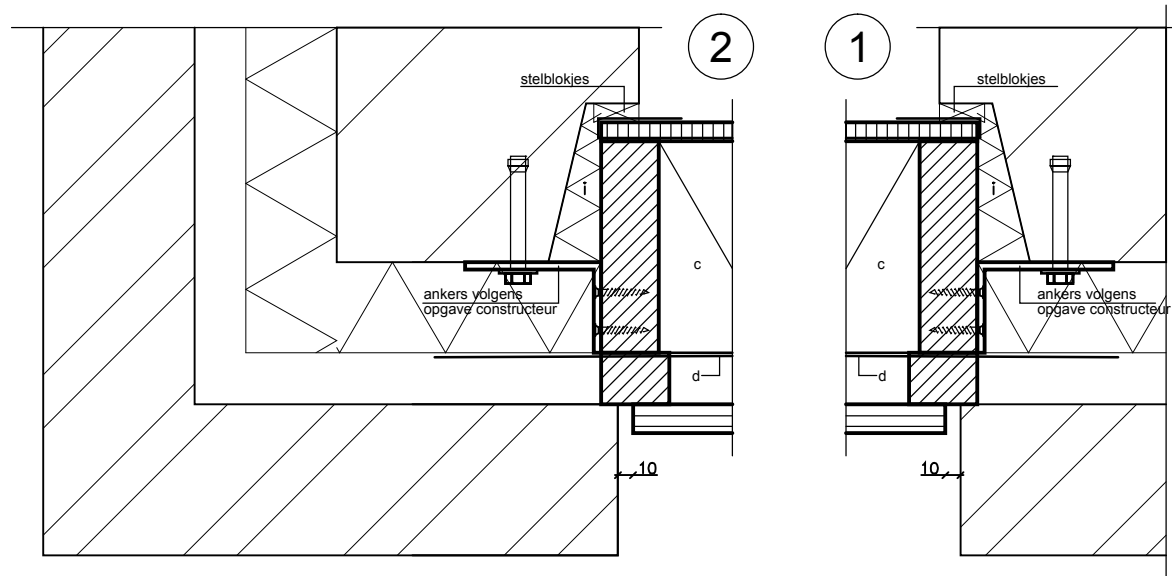


Bijlage 3: details gevelsluitende elementen

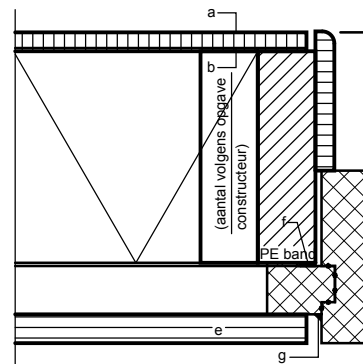


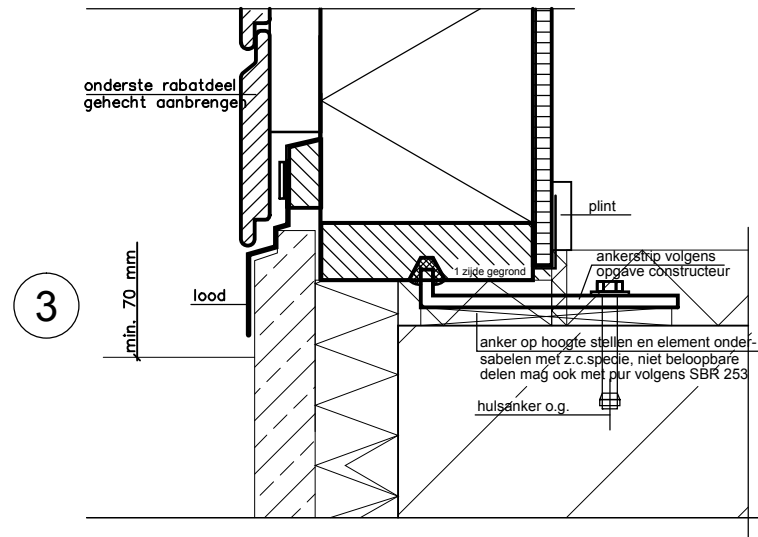
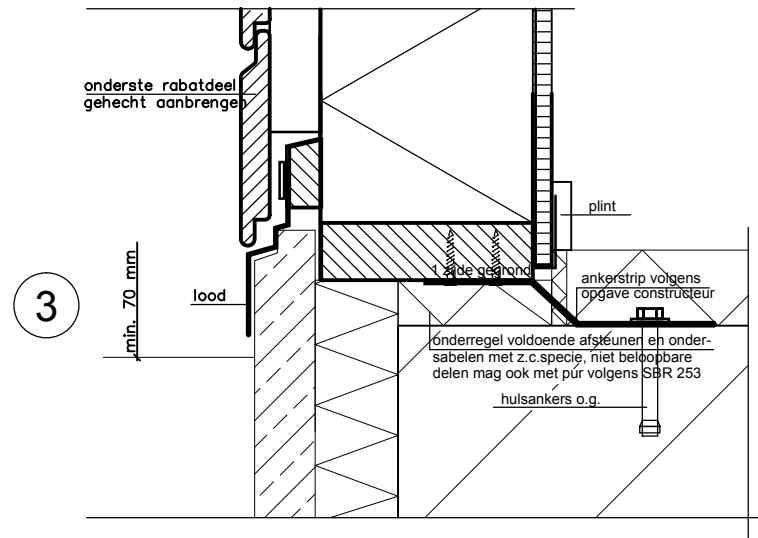
Detail:

- 1 bouwmuuraansluiting (horizontaal)
- 2 kopgevelaansluiting (horizontaal)
- 3 begane grondvloeraansluiting (verticaal)
- 4 verdiepingsvloeraansluiting (verticaal)
- 5 aansluiting kozijn (horizontaal)
- 6 aansluiting bovendorpel kozijn (verticaal)
- 7 aansluiting onderdorpel kozijn (verticaal)
- 8 onderdorpel deurkozijnaansluiting (verticaal)

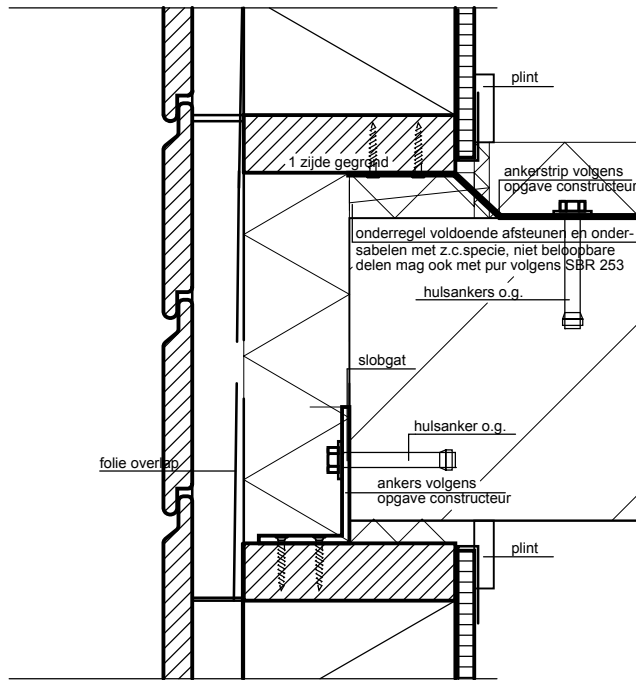


5

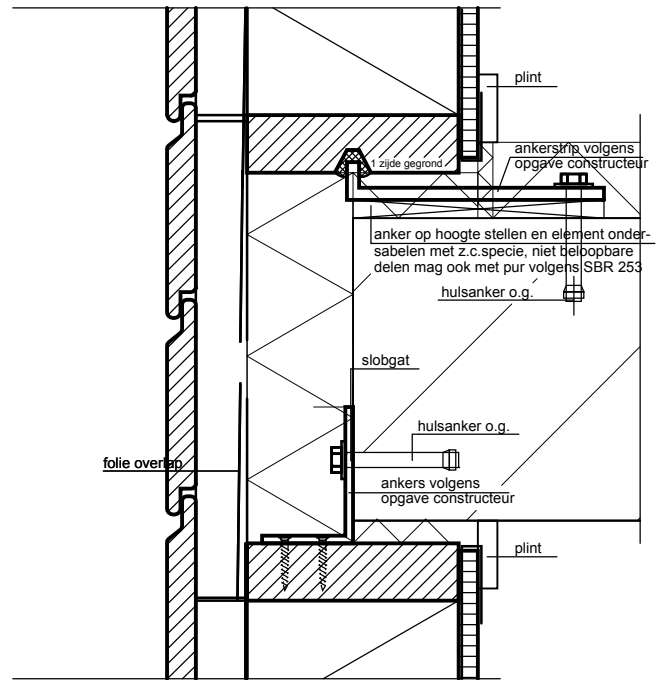




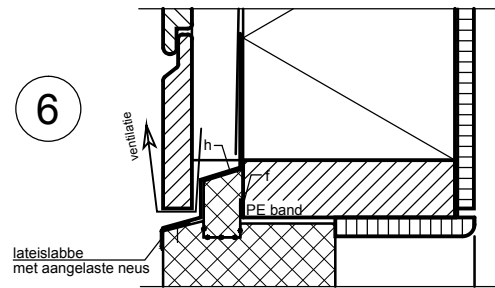
4



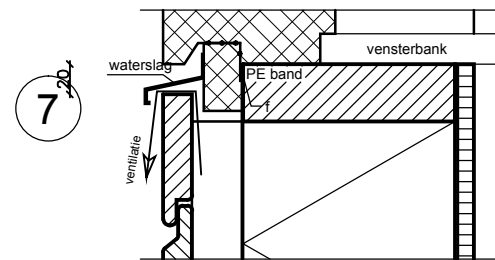
4



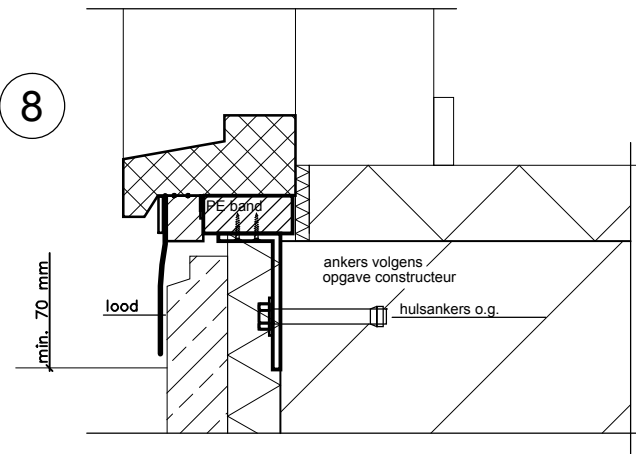
6



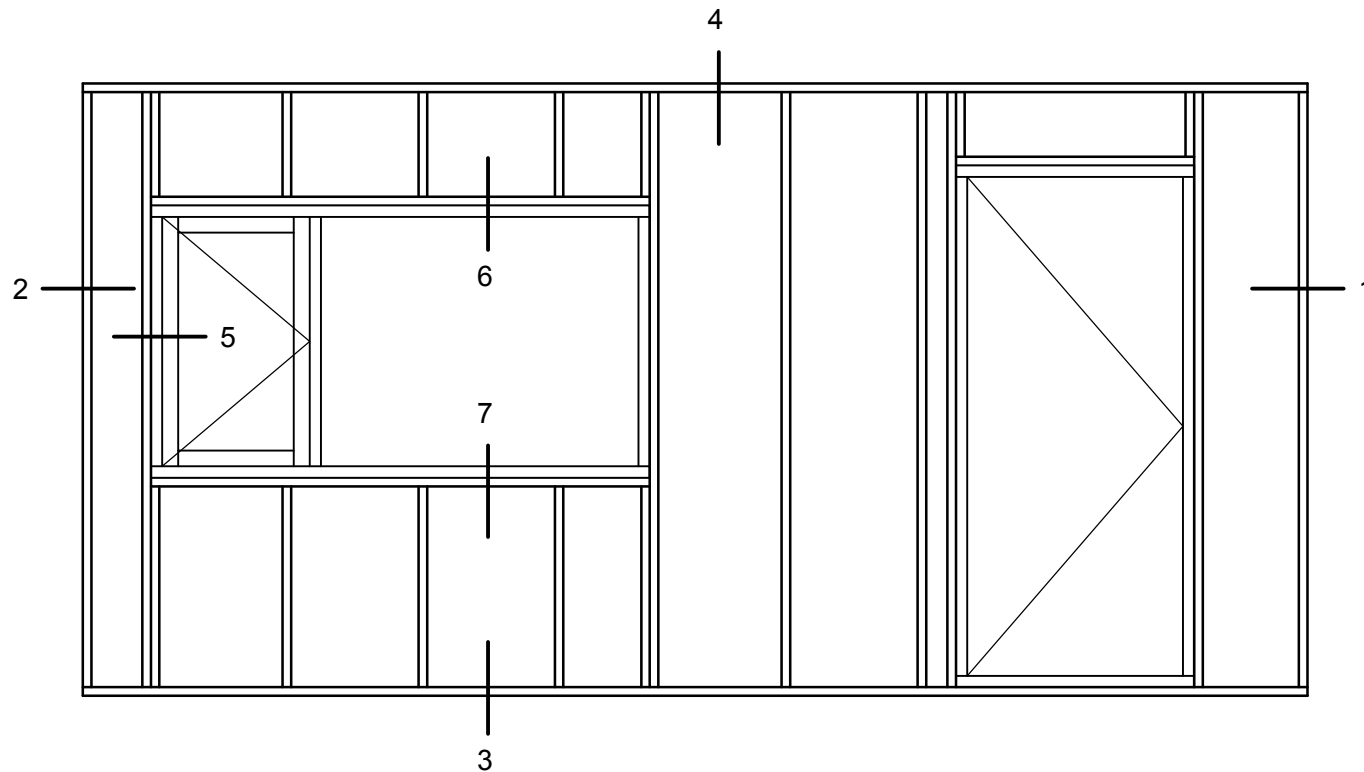
7



8



Bijlage 4: voorzetwanden



Detail:

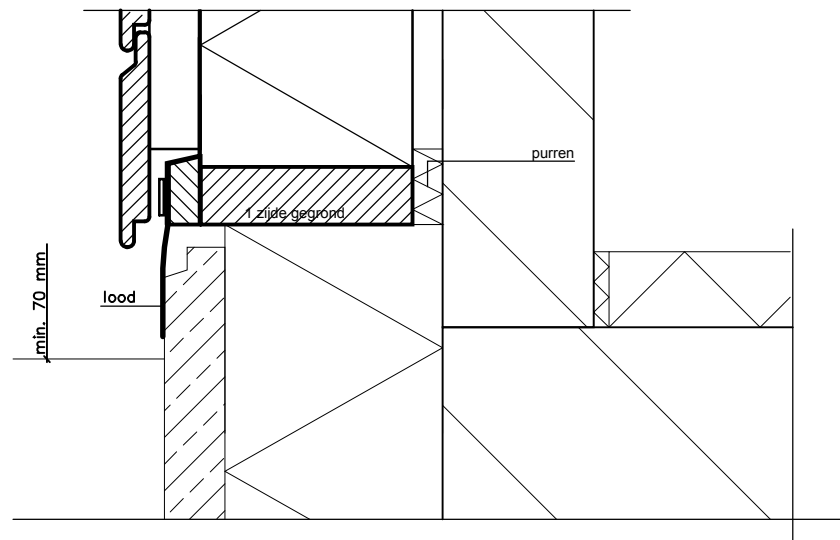
- 1 bouwmuuraansluiting (horizontaal)
- 2 kopgevelaansluiting (horizontaal)
- 3 begane grondvloeraansluiting (verticaal)
- 4 verdiepingsvloeraansluiting (verticaal)
- 5 aansluiting kozijn (horizontaal)
- 6 aansluiting bovendorpel kozijn (verticaal)
- 7 aansluiting onderdorpel kozijn (verticaal)

2

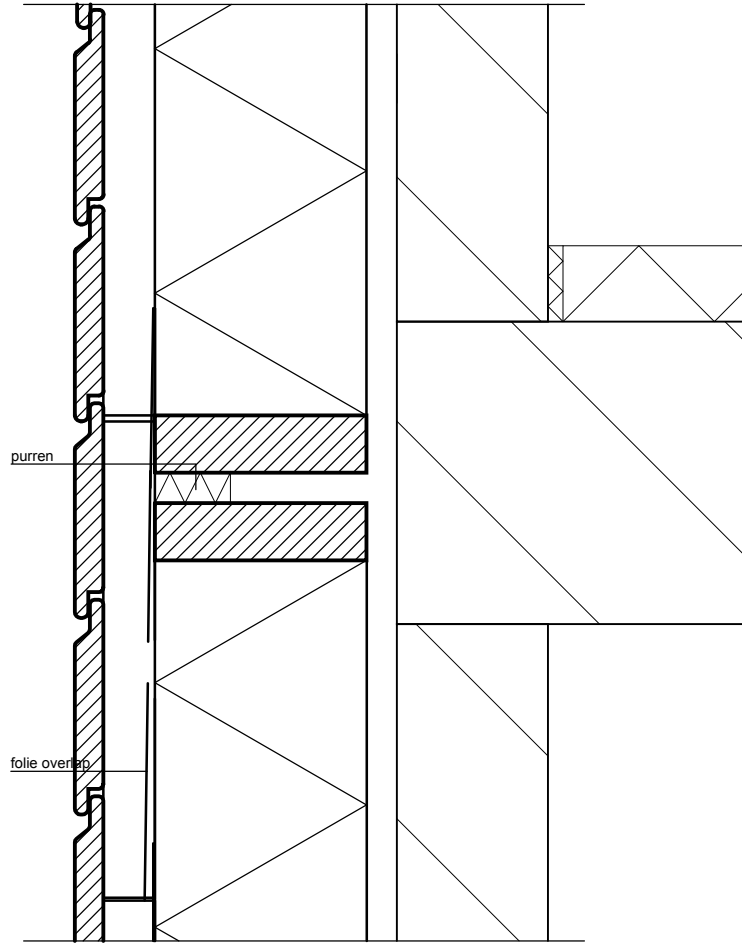
1



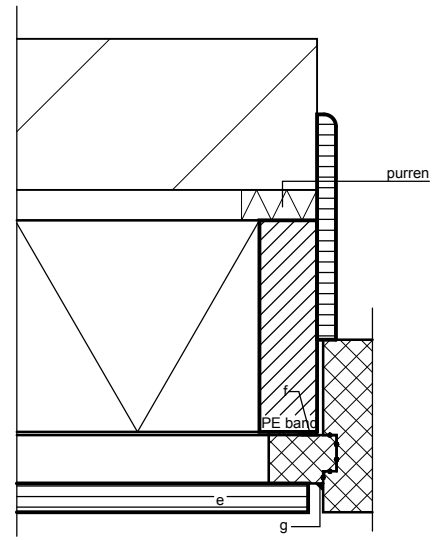
3



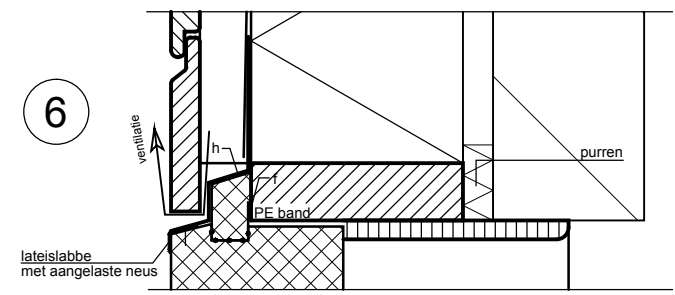
4



5



6



7

